

DuraBrake Brake Drums

DuraBrake Co. was started as Durametal Brake Co. in 1998 upon the acquisition of the brake drum business from Durametal Corporation in Tualatin, Oregon. DuraBrake strives to remain the leader in quality, high-performance specialty brake drum market for truck, bus and off-highway vehicles. This is possible by continuing to use the processes and quality systems established at Durametal Corporation over their 50 year history.

We have hundreds of part numbers in our catalog that are stock items or can be produced upon request in any quantities. Over 2000 custom part numbers have been made from the existing in-house patterns. These part numbers are well-known in the industry and are the same part numbers used by Durametal. Customers for these parts include distributors and end-users.

DuraBrake is a highly visible company known as the leader in specialty replacement brake drums for truck/bus/off-highway equipment. We are gaining market share in the truck and transit commodity replacement market with our high-quality, versatility, and cost-competiveness. Since 1948, DuraBrake* drums have served the truck, trailer, and transit industries with the **HIGHEST QUALITY and **SERVICE** unmatched in the industry.**

DuraBrake Drums...

...Are engineered to meet every type of braking application and road condition.

...Are made of the finest, controlled close-grain, high tensile iron, which means longer life and even wear.

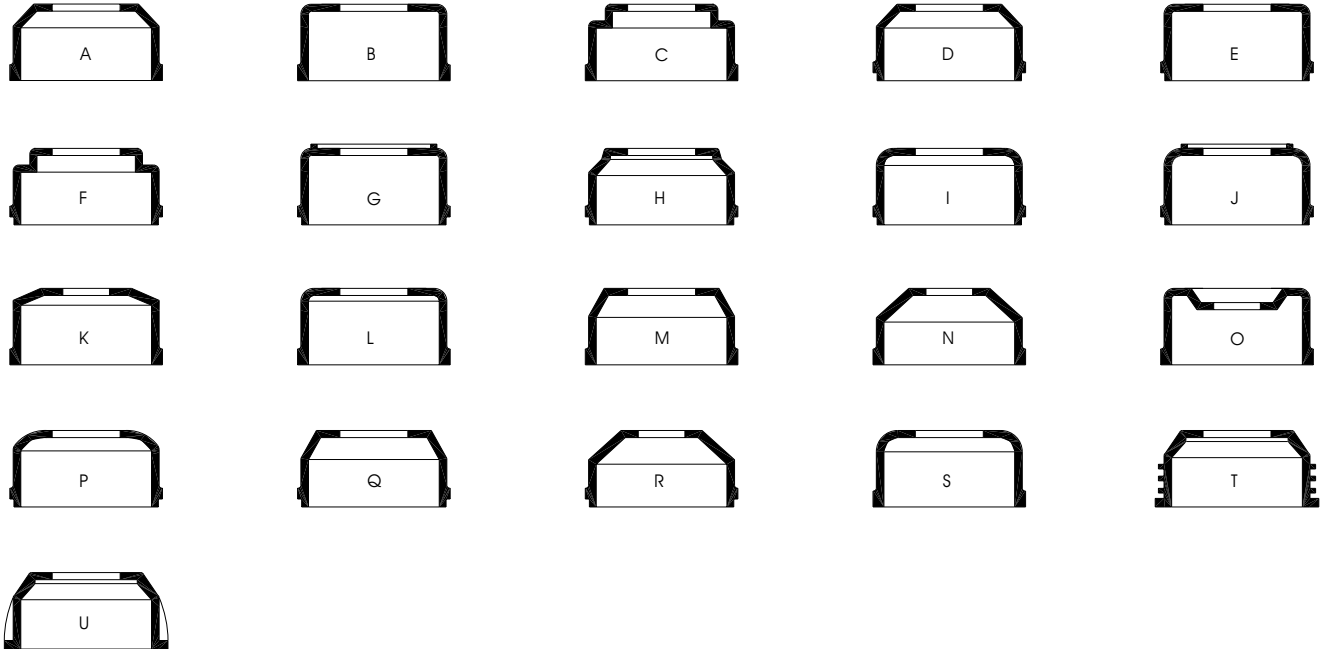
...Are precision machined and individually inspected to insure each meet rigid standards for **MAXIMUM BALANCE and **PERFECT FIT**.**

In keeping with our commitment to **HIGH QUALITY and **SERVICE**, we are constantly improving our engineering, foundry, machining, and testing techniques to provide the **SAFEST, LONGEST LASTING, and MOST ECONOMICAL** brake drum made.**

* Prior to 2002, DuraBrake drums were made under the name Durametal Brake Co. Prior to 1997, DuraBrake drums were made by the same patterns, equipment and process technology utilized by Durametal Corp.

If brake drum cannot be found in catalog or interchange, please circle drum style, fill out dimensions below, and fax to (650)949-5371

CHART OF DRUM STYLES



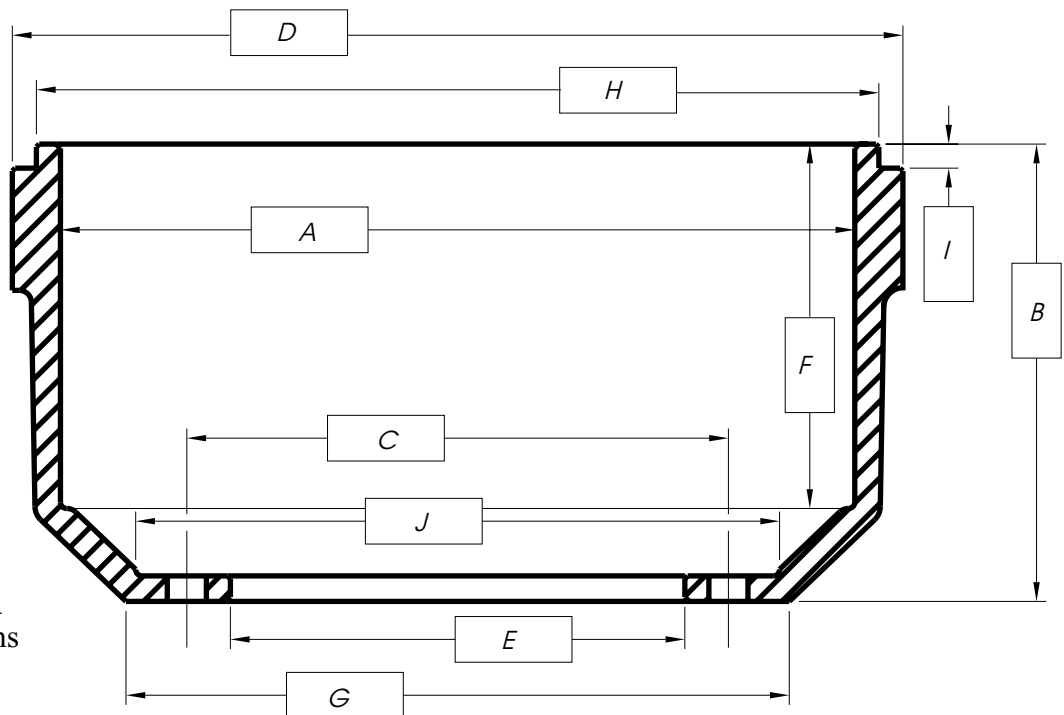
INFORMATION REQUIRED FOR DRUMS NOT LISTED

Type of Drum (as shown on chart)

Dimensions:

- A - Inside Diameter _____
- B - Overall Depth _____
- C - Bolt Circle Diameter _____ and
Number of Studs _____
- D - Outside Diameter _____
- E - Hub Pilot Diameter _____
- F - Brake Face Width _____
- G - Back Face Width _____
- H - Dust Shield Diameter _____
- I - Dust Shield Depth _____
- J - Out Board Pilot Diameter _____

Drums made to customer specifications are not returnable



Maximum Brake Face Diameter

Maximum brake face diameters are indicated on DuraBrake brake drums. For example, the words “MAX. DIA. 16.620 in.” will be found on brake drums with 16 ½ nominal brake face diameter. This means that for safe operation the brake face diameter should never exceed 16.620 inches from machining and/or wear. In general, maximum diameters for various nominal brake face diameters are set forth below:

NOMINAL SIZE	MAX. BRAKE FACE DIA.	NOMINAL SIZE	MAX. BRAKE FACE DIA.
12.00	12.09	17.25	17.37
12.25	12.34	18.00	18.12
14.00	14.09	18.50	18.62
14.50	14.62	20.00	20.12
15.00	15.12	20.25	20.37
16.00	16.12	22.00	22.12
16.25	16.37	24.00	24.12
16.50	16.62	26.00	26.12
17.00	17.12	30.00	30.12

Note: Maximum Brake Face Diameter, may be higher than specified in the above table. For example, transit brake drums are designed thicker and have a greater allowance

DuraBrake Drums are Interchangeable with ...

Our brake drums for the aftermarket are widely interchangeable with a brake drum part numbers produced by other companies such as:

**Webb
Gunite**

**KIC/Reyco
Dayton**

**ConMetco
Rockwell**

All OEM brands

Some of the above companies produce for OEM customers or captive production only. Others may produce for OEM and aftermarket applications. However, no producer is structured and positioned to serve the market as DuraBrake with six large distribution centers nationwide. We specialize in competing with other producers and in several cases we can be the only source because of our flexibility. Our older catalogs show interchangeable parts. However, to accommodate regular changes in the market we are maintaining an ongoing matrix of interchangeable parts with all producers including Webb, Gunite, ArvinMeritor, Dayton, Rockwell, KIC/Reyco, ConMetco, and many others. Please feel free to call us for your brake drum requirements: small or large, high volume or specialty, current or old equipment, and new reverse engineered brake drums.

DuraBrake Drums are Specialized...

At DuraBrake we are well positioned to serve a broad range of specialty brake drums as we have the following advantage:

- ✓ Range of patterns
- ✓ Unique no-bake molding set up for quick change of patterns
- ✓ Our own foundry and machine shop with unique features for brake drum production
- ✓ Proprietary alloys for different applications
- ✓ In-house engineering capability to reverse engineer new part numbers
- ✓ Ability to custom produce small quantity orders

Interchangeability is a function of flexibility. Perhaps we have the greatest flexibility to meet the market needs from all perspectives. Our unique setup allows us to engineer and manufacture specialty brake drums to customer requirements. This includes any quantity of drums that are: original DuraBrake part numbers, obsolete by other manufacturers, foreign, extremely expensive through OEMs, modifications of drums, new drums, or any other

DURABRAKE CO. TERMS & CONDITIONS

PRICE

Please see the most current price sheet. DuraBrake reserves the right to change prices without notice. Prices are for full pallets of a single part number. There will be an additional 10% fee on the pallet price if less than one pallet is ordered (minimum 4 drums). High-volume drum pallets will not be split. Typically pallets are composed of 16-20 drums (except rear transit drums are 8-12).

FREIGHT

Freight is prepaid on all orders delivered in the United States over 96 drums unless otherwise agreed upon by DuraBrake Co. Customers picking up orders are eligible for a 5% discount for pickups over 96 drums. Minimum two pallets per pickup. Less than two pallets per pickups will require a \$10 additional fee. There may be additional fees to Alaska, Hawaii, Canada, and Puerto Rico.

TRAILER-LOAD PRICING

Full trailer-loads shipped directly from the factory are eligible for trailer prices. Parts must be ordered in pallet loads with up to five part numbers.

SPECIAL DRUM FEATURES

If special features are required on the drums such as balancing, undersized or oversized brake face, special chemistries, or drill holes, please state on the purchase order. For machine balancing, please add \$3.00 to the price of the drum.

PURCHASE ORDERS

All orders must be submitted in writing via email or fax. Verbal orders still require an official written purchase order.

PAYMENT

DuraBrake must approve all new accounts. All invoices are to be paid Net 30 unless agreed otherwise. Finance charge of 1.5% per month will be assessed on past due accounts. Credit cards may be used for payment, however additional fees may apply.

WARRANTY

DuraBrake Co. warrants all brake drums manufactured by DuraBrake when properly installed and maintained to be free from defects in material and workmanship.

The responsibility of the company, under this warranty, is limited to replacement, of, or credit for any drum which has failed within three months of the date of its application, and which has been returned to the factory freight prepaid, and found, upon examination, to be defective to the satisfaction of the company.

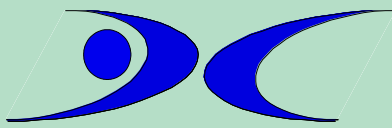
This warranty shall not apply to brake drums which have been subjected to misuse, negligence, accident, or which have been misapplied or tampered with thereby affecting the reliability or stability of the drum.

RETURNS

All returns require a Returned Goods Authorization prior to shipment and are to be shipped prepaid. Returned drums are subject to a 20% restocking charge.

SHORTAGES

All claims for shortages must be filed within one week from receipt date.



DuraBrake Brake Drums...the Gold Standard of the Industry

DuraBrake Variety: Unmatched in the Industry

DuraBrake continues the parts and traditions of its predecessor, Durametal, and is well-recognized in the industry for its experience in heavy-duty brake drums for trucks, buses, and off-highway equipment. DuraBrake makes over 2,000 different brake drum part numbers and makes equivalents for most Webb, Gunite, Meritor, Rockwell, and other OEM drums. In addition, we make all Durametal part numbers derived from over 50 years of manufacturing..

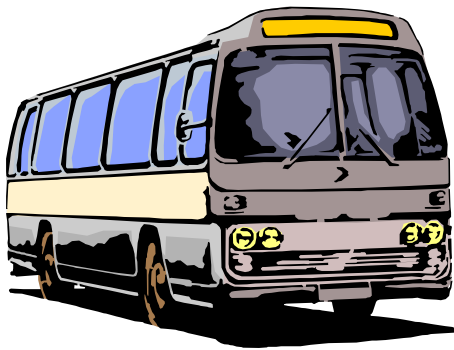


Our Drums are Produced Using a Refined Process

- We utilize a molding process that allows: Higher strength, Better control on mechanical properties, Easier and cheaper development costs on new patterns, Ability to create new part numbers with existing patterns, Better surface finish
- We utilize a melting process that is ideal for brake drum metallurgy and allows: homogeneous metal, cleaner metal, less air pollution, increased braking performance, better machinability, and higher hardness and tensile strength
- We machine the castings with CNC lathes for dimensional accuracy and CNC drilling or multi-spindle drilling for good stud hole line-up
- Parts are produced to engineered drawings available for each part number

Our Drums Are Engineered for Performance Making Us the Gold Standard

- Tensile Strength: 35,000 psi minimum
- Carbon greater than 3.4%, allowing higher strength and better resistance to heat checking, braking performance, and wear characteristics. Most competitors use metal with 3.1% Carbon minimum
- Alloys added for creep resistance, strength, and longevity
- Transit bus drums have ribs for better cooling and strength
- Increased weight for larger heat sink and higher longevity
- Tight dimensional tolerances for drum strength and less chance of shift and cracking
- Optional features include: sensor teeth for anti-lock mechanisms, tapped holes for sensors, higher alloys, balancing, undersized brake face diameter, treatment for substantial increase in brake drum life



Why Choose Use Us For Your Replacement and OEM Brake Drums?

- Price competitiveness on all part numbers
- Quick delivery and will-call pick ups from distribution warehouses
- We're a certified Minority-Owned DBE, useful for government customers
- Flexible manufacturing and design options for customization
- We are run by engineers that believe in a quality product and not reducing costs by reducing quality
- High quality brake drums made with superior mechanical designs, chemistries and metallurgy that have been proven at reputable braking laboratories
- We supply over 100 distributors and several major OEMs

Technical Documents Available: Mechanical and chemical specifications, part drawings, brake dynamometer test results, process documentation

Primary Office:

PO Box 1480
Los Altos, CA 94022
Phone: (650)949-5365

Plant Locations:

Baltimore, MD
Chihuahua, Mexico
Shandong, China
Maharashtra, India

Warehouses:

Stockton, CA	Houston, TX	York, PA
Portland, OR	Carrollton, KY	Kenilworth, NJ
Pasco, WA	Miami, FL	Detroit, MI
El Paso, TX	Baltimore, MD	Mississauga, ONT

Electronic Addresses:

Web Site:
www.durabrake.com
Email:
sales@durabrake.com

Webb P/N	DuraBrake P/N	Webb P/N	DuraBrake P/N	Webb P/N	DuraBrake P/N
60660B	14437	61659F	14139	62439F	12140
60876F	16729	61727F	16129	62562F	14990
61503F	14057	61727F	16727	62634F (Obs)	1634
61503F	14331	61728F	16728	62670B	16671
61510B	14412	61728F, 61730F	16326	62671F	16687
61511F	14683	61730F	16173	62672F	16672
61511F	14411	61731F	16731	62683F, 66693F	16871
61517F	1483	61733F	16930	62684F	16872
61517F	1484	61774F	16901	62699B (Obs)	1461
61517F	14835	61775F (Obs)	16132	62699F (Obs)	14299
61518B	14418	61777F (Obs)	16878	62997F	16997
61526F	14260	61780F	16149	63031B	16031
61527B	14684	61788F	18788	63032F	16032
61528B	14575	61791F	16791	63035F	14201
61529F	14529	61791F	16917	63163F (Obs)	13111
61536F	14736	61841F (Obs)	1841	63240F	16026
61545F	14116	61850F	18070	63279F	16279
61547F	14810	61852F	18040	63290F	14011
61548F	14590	61853F	18175	63294F	14294
61554F	14668	61854F	18171	63410F	16410
61555F	14111	61855F	18174	63411F	16910
61566F	14566	61856F	18856	63417F (Obs)	1612
61567F	14967	61858F (Obs)	1800	63423F	15423
61571F	14971	61859F	18685	63427F	16427
61573B	14930	61860F (Obs)	18441	63430F	16896
61573B	14173	61862F	18050	63435F	16435
61574F	14974	61863F	18863	63436F	16437
61576F	14576	61864F (Obs)	18060	63447F	16447
61577F	14977	61950B	14950	63628F	12628
61581F	14981	61951B	14951	63630F	12630
61583F	14972	61958B	14685	63631F	12440
61586F	14806	61988F	14988	63632F	12632
61591F	14973	61989F	14989	63633F	12633
61595F	14700	61991F	14991	63634F	12634
61598F	14500	61992F	14992	63635F	12635
61598F	14710	61999F	14998	63635F	12410
61598F	14395	62055F (Obs)	15055	63636F	12636
61599F	14899	62071F (Obs)	20057	63637F	12637
61600B	14280	62072F (Obs)	20056	63639F	12639
61601F	14090	62074F (Obs)	15074	63645F	12240
61601F	14391	62092F (Obs)	1687	63647F	12617
61602F (Obs)	1472	62115B	16115	63650F	12365
61604F (Obs)	1474	62117F	16289	63653F	12414
61605F (Obs)	1410	62119F (Obs)	16865	63654F	12506
61606F	14550	62199F	16879	63658F	12510
61606F	14860	62200F	16290	63688F	12450
61606F	14606	62240F	16325	64001F	14504
61612F	14210	62292F (Obs)	16284	64003F, 64113F	14519
61627F (Obs)	16931	62358F	12110	64004F	14503
61628F (Obs)	16543	62437F	12437	64008F	14509

Note:

7/1/2004

DuraBrake makes over 2,000 different brake drum part numbers, and can make any obsolete or custom drum. For more parts, please call us. Interchange information is based upon best available information. Therefore, accuracy of interchangeability information cannot be assured. DuraBrake drums are not balanced unless requested. The charge for balancing is an additional \$3.00

Webb P/N	DuraBrake P/N	Webb P/N	DuraBrake P/N	Webb P/N	DuraBrake P/N
64009F	14508	64417F	14417	65157B	14682
64015F	14513	64418F (Obs)	14279	65161B	16161
64016F	14394	64419F	14094	65162F	16162
64016F	14115	64420F	14430	65163F	16138
64017, 64117/9	14518	64421F	13303	65165B	14465
64018F	14018	64425F	13845	65166B	16062
64028F	14828	64426F	14271	65166B	16066X
64031F	16262	64427F	14155	65167B	16057
64035F	16075	64428F	14428	65169B	16060
64036F	14030	64429F	13290	65170B	16064
64038F	14040	64430F	13170	65172B	16522
64039F	15139	64432F	14432	65173B	16615
64040F	15115	64438F (Obs)	1419	65175F	16375
64041F	16073	64440F	16444	65176F	16176
64042B	16240	64441F	14560	65177B	16177
64044F	14025	64444F	14245	65179B	16179
64045B	16045	64445F	14455	65182B	16182
64046F	14038	64448F	14848	65183B	16183
64047F	16267	64449F	14249	65197B	16197
64048F	14048	64450F (Obs)	1460	65246F	14446
64049F	14086	64453F	14186	65250F (Obs)	1604
64050B	16048	64454F	14223	65256B	14463
64051F	16051	64455F	14120	65266B	16992
64053F	16053	64456F	14456	65514B	14571
64057F	16049	64457F	14457	65515B	14615
64059F	15116	64459F	14259	65516B	16151
64062F	15112	64460F	14326	65526B	16526
64065B	15908	64463F	16263	65540B	14274
64073F	14573	64464F	14244	65541B	14158
64082F	15802	64466F	16420	65541B	14541
64089F	15113	64467F	16467	65542B	14542
64100F	14514	64468F	16468	65543B	14943
64101F	14580	64469F (Obs)	15169	65545B	14945
64105F	14530	64473F	14473	65546B	14546
64106F	14106	64474F	14423	65547B	14947
64112F, 64113F	14525	64477F	14278	65548B	14448
64115B	14523	64478F	14078	65549B	14153
64125F	16125	64479F	14051	65550B	14255
64401F	14420	64481F	14647	65551B	14569
64402F	14400	64482F (Obs)	14482	65554B	14254
64403F	14167	64483F	14124	65555B	14655
64404F	14169	64484F	14484	65600B	16600
64405F	14166	64485F	14286	65607B	16607
64406F	14970	64489F	14674	65650B	16035
64407F	14718	64492F	14402	65651B	16155
64408F	14717	65004F	14512	65651B	16065
64408F	14180	65152B	16352X	65654B	16033
64409F	14409	65155B	14355	65670B	16146
64410F	14408	65156B	14256	65710B	16571
64413F	14243	65157B	14156	65735F	14735

Note:

7/1/2004

DuraBrake makes over 2,000 different brake drum part numbers, and can make any obsolete or custom drum. For more parts, please call us. Interchange information is based upon best available information. Therefore, accuracy of interchangeability information cannot be assured. DuraBrake drums are not balanced unless requested. The charge for balancing is an additional \$3.00

Webb P/N	DuraBrake P/N	Webb P/N	DuraBrake P/N	Webb P/N	DuraBrake P/N
65739B	16739	66871F	16071	68845F	16903
65753F	15753	66873F	16145	68845F	16904
65758F	15758	66874B	16793	68845F	16903
65829B (Obs)	1505	66875F	16141	68846B	16905
66036F (Obs)	1652	66878F	16788	68848F	16902
66066F (Obs)	1621	66879F	16789	68862F	16862
66077F (Obs)	1618	66881B	16282	68865F	16401
66095F (Obs)	1622	66883F	16796	68872B	14872
66096F	16010	66884F	16782	68878F (Obs)	1657
66096F	16640	66886B	16368	68879F (Obs)	1682
66177F, 66277F	16260	66887B	16587	68880F	15040
66200F	16702	66888F	16588	68882F	16385
66201F (Obs)	16281	66890B	16590	68885F (Obs)	16295
66231F	16231	66891F	1636C	68887B	16650
66246F	16170	66891F	16921	68891F	16296
66283F	16283	66892F	16797	68895F	16720
66364B	16464	66893F	16795	68896F	16900
66366F	16466	66895B	16794	68897F	16907
66374B	16474	66896F	16922	68898F (Obs)	1667
66547F (Obs),	1688	66897F	1636A	68903F	16408
66626F	16126	66898F (Obs)	16172	68903F	16407
66660B	16660	66899B	16360	68909F (Obs)	16196
66661B	16783	67101B	16101	68910F (Obs)	1658
66668B	16668	67156B	16156	68918F	16618
66786F (Obs)	1679	67205F	16297	68921F	16850
66800F	16647	67205F	16717	68922F	16417
66801B	16802	67407B	16507	68923F (Obs)	16224
66810F	16020	67486B	16486	68924F (Obs)	1583
66812F	16070	67518F	16874	68926F (Obs)	16911
66814F	16814	67519F	16300	68927F	16421
66815F	16143	67537F	16310	68928F (Obs)	1702
66816F	16147	67599F	16599	68931F	16422
66817F	16144	67615B	16811	68940F	16940
66818F	16148	68012F	16402	68942F	16139
66822F	16077	68013F	16396	68946F	16946
66827B	16268	68036F	16111	68955F (Obs)	16884
66829F	16269	68037F	16113	68958F	16516
66830B	14831	68114B	14214	68970B	16531
66834F	16834	68710F (Obs)	16392	68981F, 68983F	16778
66843B	16843	68730F	16390	68982F	16779
66847F	15847	68731F	16320	68983F	16894
66848F	15848	68732F	16832	68985F	16985
66854F	16854	68733F	16321	68986B	16986
66857F	16857	68734F	16734	68988F	16988
66862F	16962	68760F	16760	68989F	16367
66864F	16792	68765F	16400	68995B	16995
66865B	16123	68797B	16767	69870B	14871
66866B	16074	68801F	16801	69996B	16996
66867B	16786	68844F	16350		
66868F	16124	68844F	16452		

Note:

7/1/2004

DuraBrake makes over 2,000 different brake drum part numbers, and can make any obsolete or custom drum. For more parts, please call us. Interchange information is based upon best available information. Therefore, accuracy of interchangeability information cannot be assured. DuraBrake drums are not balanced unless requested. The charge for balancing is an additional \$3.00

Gunitite P/N	DuraBrake P/N	Gunitite P/N	DuraBrake P/N	Gunitite P/N	DuraBrake P/N
1373B	1505	2521D	14835	2770	14420
1525L	1621	2539	16900	2770A, 2770B	14400
1545A	1687	2539A	1657	2774	14680
1745	1618	2540A (Obs)	1800	2782	16411
1746H	16291	2543 (Obs)	16543	2827, 2848	14848
1746H	16295	2544	16931	2833 (Obs)	16436
1900	16284	2546B	16850	2843A	14550
1904	16166	2546C	16400	2845	13845
1985	1475	2554	16150	2847	15255
2015	16172	2562	14990	2849	16901
2040	1611	2563A (Obs), 2563B	14563	2850	14018
2040A	1612	2568	14508	2851	16727
2062	16865	2573	16384	2851D	16726
2143	16324	2577A	16149	2852, 2852D	14860
2158	1509	2581A	14488	2853	16406
2187A, 2302, 2313,	16224	2581A	14484	2855	15855
2210	16896	2598A	16417	2908A (Obs)	1521
2213A (Obs)	15161	2602	16728	2912B, 3767	16151
2239B (Obs)	16259	2603	14430	2912F	16153
2242 (Obs)	14559	2604, 2829	14566	2912H	16152
2249 (Obs)	16868	2607, 2626A	14210	2913B, 2913C	14615
2255	16881	2612	1414	2913C	14913
2256A	14429	2645	16154	2920	16155
2256C	14428	2647	15847	2920	16065
2283C	16894	2658D	14390	2920	16075
2288	16196	2658G	14395	2920B	16920
2303	13303	2663 (Obs)	1460	2954	14119
2306 (Obs)	1605	2665	14116	2954	14173
2311	16869	2667	14667	2954A	14576
2324 (Obs)	1417	2668	14139	2974, 2730, 3028B	16325
2392 (Obs)	16884	2669 (Obs)	14072	2982A	18175
2394	14394	2672	16760	2983C	16874
2400	14590	2673	14673	2989	15989
2401	14530	2684 (Obs)	1583	2993	16993
2401B	14106	2685E	14700	2997, 2997D	16997
2459	1634	2697	14970	3002B	16427
2500 (Obs)	16252	2702	16311	3012A	16396
2501	1604	2705, 3732	16290	3012B	16402
2505A	16392	2706	14564	3018A, 3564A	16390
2512	16879	2717	14717	3022B	16992
2516	14090	2718, 2582A	14271	3023	14078
2516 (Obs)	1485	2728B	14810	3030A	14313
2517C	14317	2741 (Obs)	15169	3031A	16031
2517H	14280	2742	14120	3037	16327
2521D	1483	2747F	18174	3039	16526
2521D	1484	2762	17762	3045A, 3669	14417

Note:

7/1/2004

DuraBrake makes over 2,000 different brake drum part numbers, and can make any obsolete or custom drum. For more parts, please call us. Interchange information is based upon best available information. Therefore, accuracy of interchangeability information cannot be assured. DuraBrake drums are not balanced unless requested. The charge for balancing is an additional \$3.00

Gunitite P/N	DuraBrake P/N	Gunitite P/N	DuraBrake P/N	Gunitite P/N	DuraBrake P/N
3046C	14463	3258	15258	3456	14345
3054	14051	3259	14259	3467B	12637
3060	15080	3260	14326	3472 (Obs)	15055
3071X (Obs)	14125	3265, 3112A	16032	3473 (Obs)	15074
3086X (Obs)	15121	3266	18266	3474	16020
3090X (Obs)	16121	3279 (Obs)	14279	3475	16070
3094	14094	3285	14286	3485B	14201
3097	14097	3285A	14285	3488	20580
3097A	14981	3289	16289	3490	16922
3097B	14098	3290	14153	3508	14668
3111A	16111	3291A	14391	3512	14682
3119A, 3760B	14571	3292	16115	3524	14057
3120	16729	3294	14294	3535	14435
3125	14325	3295A	16778	3537	14011
3134	14828	3329	13290	3544	16409
3136A	16385	3333 (Obs)	14441	3557	12440
3136A, 3556	16139	3381A	16112	3557A	12410
3136B	16516	3383	16296	3574, 3608	14255
3141, 3578	16794	3402	16145	3574A	14157
3141B, 3401A	16141	3402A	16788	3576	16782
3151	14415	3408	14108	3595	16595
3152	15152	3409	14409	3595	16904
3154	14456	3409A	14408	3595A	16905
3155	14155	3410AX	16368	3596A, 3645	14872
3158, 3480	14158	3410AX	1695	3596B	14947
3159	14159	3410X	16360	3597A, 3774A	14458
3166, 3483	16795	3411	14411	3598A	16168
3168	16421	3413R (Obs)	14419	3598B	16167
3169	14169	3417	13170	3600	16602
3169A	14166	3419	15177	3600A, 3401	16792
3174	12617	3422	14242	3601	14422
3186	14186	3423	14473	3602	14702
3195	16791	3436	14278	3603	14055
3196, 8656, 2542	16907	3437, 3513	16057	3604	14603
3197	18788	3437A	16058	3605	16605
3219	14971	3438	14156	3607	16862
3219	14973	3441	16123	3609	16663
3219A	14977	3444	12365	3610	14124
3242A	16420	3445	14455	3611	17611
3243	14243	3446	14446	3612	16026
3244B	14246	3447	14718	3613	17711
3244C	14245	3448	16902	3614	17614
3249	14249	3450	14423	3615	14126
3251	15251	3451	14560	3616	20570
3252	14252	3452	14112	3617	15617
3257	16857	3454	14223	3618	16618

Note:

7/1/2004

DuraBrake makes over 2,000 different brake drum part numbers, and can make any obsolete or custom drum. For more parts, please call us. Interchange information is based upon best available information. Therefore, accuracy of interchangeability information cannot be assured. DuraBrake drums are not balanced unless requested. The charge for balancing is an additional \$3.00

Gunitite P/N	DuraBrake P/N	Gunitite P/N	DuraBrake P/N	Gunitite P/N	DuraBrake P/N
3620	18685				
3646	14091				
3649	13114				
3655	13112				
3665	16665				
3667	14542				
3674	14647				
3674A	14674				
3676	16988				
3676A	16367				
3678	16650				
3678A	16720				
3681	16866				
3686	14355				
3687	16687				
3699, 3293	16797				
3710	16571				
3721AX	14575				
3721AX	14675				
3721BX	14831				
3721X	14684				
3726X	14254				
3729	14257				
3741	14943				
3744	14991				
3744A	14998				
3753	14976				
3753A	14978				
3754	14951				
3758, 3598	16161				
3759	16759				
3759A	16732				
3765	16765				
3780A, 3807, 3807A	16854				
3800X	14792				
3851	14048				
3852	14038				
3854	16060				
3854	14513				
3854X	14523				
3855	14514				
3855	14518				
3856	15115				
3857	15113				
8670 (Obs)	1410				
8671, 2852E, 2852B	14877				

Note:

DuraBrake makes over 2,000 different brake drum part numbers, and can make any obsolete or custom drum. For more parts, please call us. Interchange information is based upon best available information. Therefore, accuracy of interchangeability information cannot be assured. DuraBrake drums are not balanced unless requested. The charge for balancing is an additional \$3.00

7/1/2004